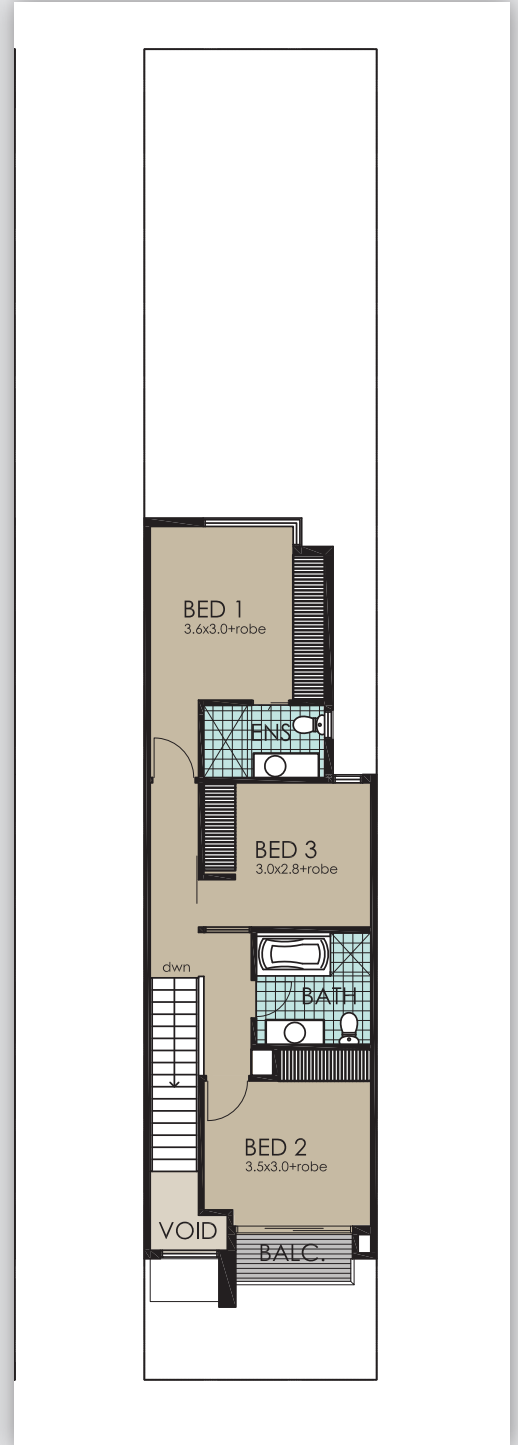
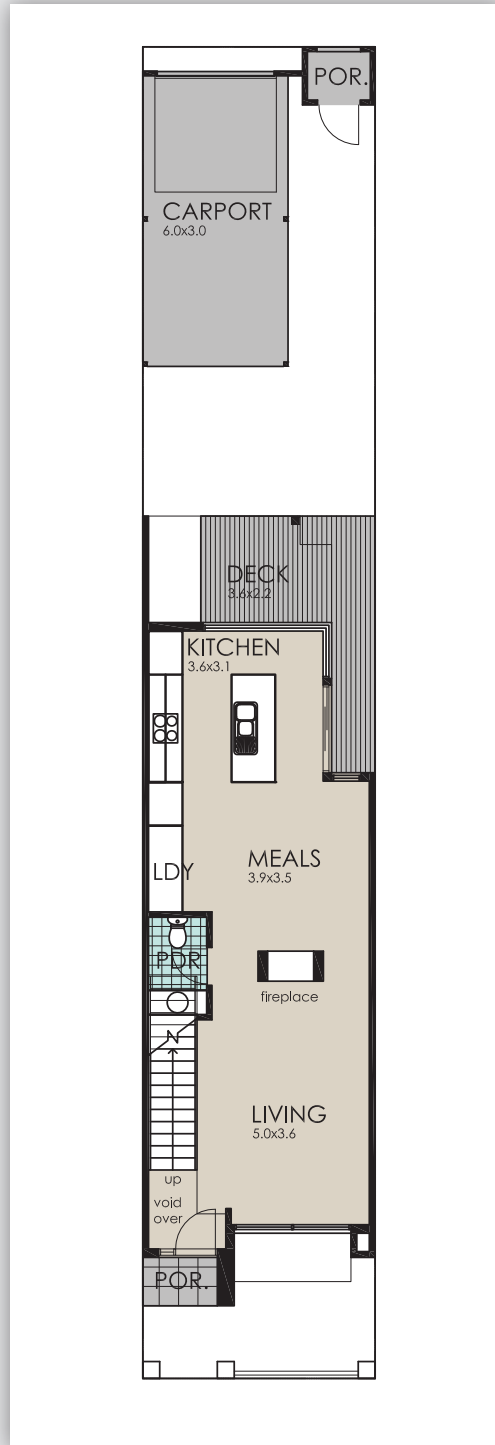


At Australian Classic Homes all of our homes are tailored to your requirements, your site & your budget, **The Manhattan 48-3** is purely a conceptual starting point

AREAS

Living - Lower	58.90m ²
Living - Upper	66.90m ²
Balcony	3.00m ²
Carport	18.30m ²
Deck	10.70m ²
Porch	1.90m ²
Rear Porch	1.80m ²
Total	161.50m²



The home features:

- ✓ Large living area
- ✓ 3 bedrooms
- ✓ 2 bathrooms
- ✓ Timber Deck & Pegola
- ✓ Island breakfast Bar
- ✓ Laundry
- ✓ Balcony
- ✓ Seperate Powder room
- ✓ Single carport

Australian Classic Homes

252 Magill Road, Beulah Park, SA 5067
 PO Box 3457, Norwood SA, 5067

www.austclassichomes.com.au

Phone 08 8332 6099

Fax 08 8332 6299

Email enquiries@austclassichomes.com.au

