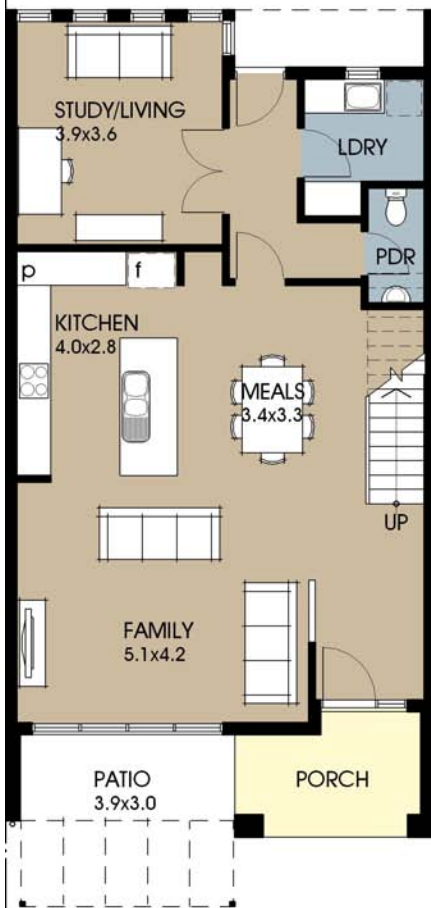


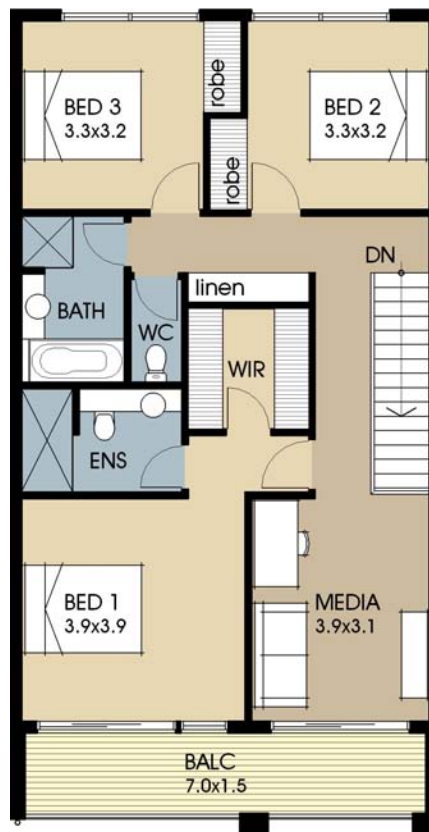
Front view

Individually designed for your style and block requirements

- Rear loading block 7.5m wide
- Lockup Double Carport to rear including paving
- Choice of façade finish and colours
- 2 large front facing Living areas plus separate rear Study
- 3 Bedrooms, 2 Bathrooms, 3 toilets
- Generous robe allowance and storage space
- Balcony to front
- Plan easily modified to suit different block designs



Ground Floor Plan



Upper Floor Plan

Terrace R75A

Ground Floor Living	91.3 m ²
Upper Floor Living	95.4 m ²
Carport / Porch	37.0 m ²
Porch	6.6 m ²
Patio	11.2 m ²
Balcony	10.5 m ²
Total Area	252.0 m²
House Width	7.5 m



Listen, advise and create