



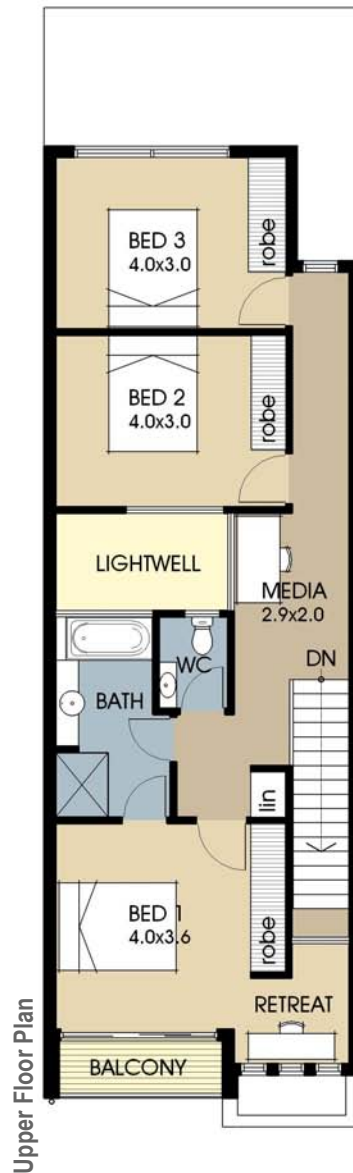
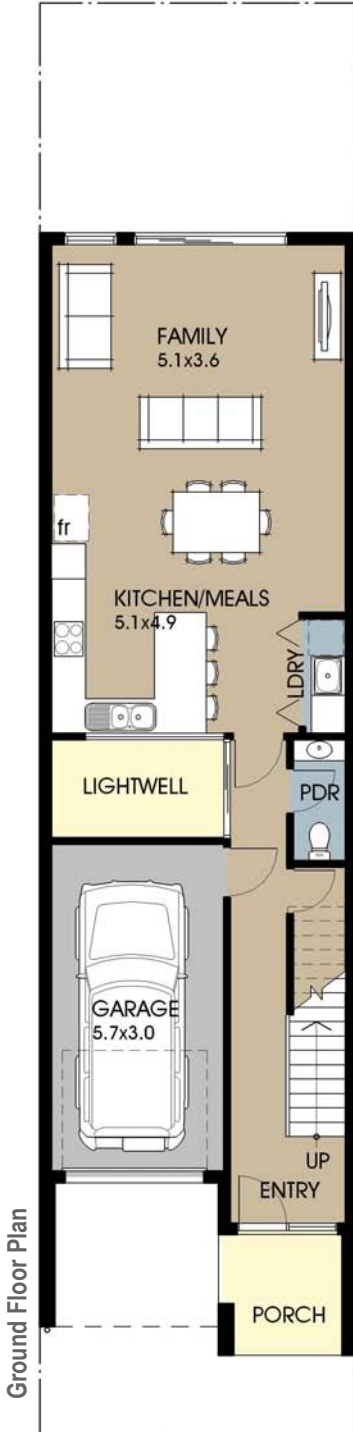
Front view

Individually designed for your style and block requirements

- Front loading block 5.5m wide with 4.5m set-back to Garage
- Choice of façade finish and colours
- One Living area
- Media Area to upper floor
- 3 Bedrooms, 1 Bathroom, 2 toilets
- Light-well incorporated in the design to provide natural light to all areas
- Generous robe allowance and storage space
- Balcony to front
- Plan easily modified to suit different block designs

### Terrace F55A

Ground Floor Living	69.3 m <sup>2</sup>
Upper Floor Living	80.3 m <sup>2</sup>
Garage	19.8 m <sup>2</sup>
Porch	4.5 m <sup>2</sup>
Balcony	2.8 m <sup>2</sup>
Light-well	5.1 m <sup>2</sup>
<b>Total Area</b>	<b>181.8 m<sup>2</sup></b>
House Width	5.5 m



*Listen, advise and create*



### Front view

Individually designed for your style and block requirements

- Front loading block 5.5m wide with 4.5m set-back to Garage
- Choice of façade finish and colours
- One Living area with option of upper floor Bedroom 2 being converted to a Sitting Area
- Media Area to upper floor
- 3 Bedrooms, 2 Bathrooms, 3 toilets
- Light-well incorporated in the design
- Generous robe allowance and storage space
- Balcony to front
- Plan easily modified to suit different block designs

### Terrace F55B

Ground Floor Living	69.9 m <sup>2</sup>
Upper Floor Living	82.4 m <sup>2</sup>
Garage	19.4 m <sup>2</sup>
Porch	7.4 m <sup>2</sup>
Balcony	3.6 m <sup>2</sup>
Light-well	2.1 m <sup>2</sup>
<b>Total Area</b>	<b>184.8 m<sup>2</sup></b>
House Width	5.5 m



*Listen, advise and create*



**Front view**  
Individually designed for your style and block requirements

- Front loading block 5.5m wide with 4.5m set-back to Garage
- Choice of façade finish and colours
- 2 Living areas with natural light
- 2 generous size Bedrooms (with option of 3 Bedrooms)
- 2 Bathrooms, 3 toilets
- Light-well incorporated in the design
- Generous robe allowance and storage space
- Balcony to front
- Plan easily modified to suit different block designs

### Terrace F55C

Ground Floor Living	69.9 m <sup>2</sup>
Upper Floor Living	83.6 m <sup>2</sup>
Garage	19.4 m <sup>2</sup>
Porch	7.4 m <sup>2</sup>
Balcony	6.2 m <sup>2</sup>
Light-well	2.1 m <sup>2</sup>
<b>Total Area</b>	<b>188.6 m<sup>2</sup></b>
House Width	5.5 m



*Listen, advise and create*