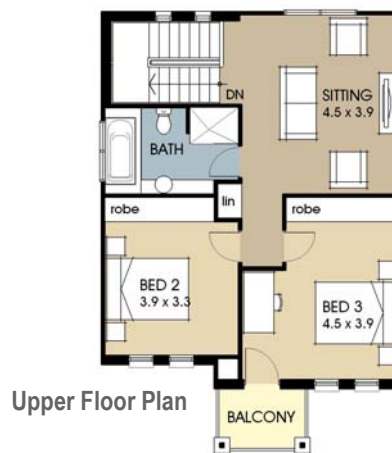




traditional



In addition to our **Prestige Specification** the following items are included:

- Paved Patio
- Rainwater Tank with Rainbank Pump System
- Tiled Balcony
- Feature Stone on Metro Façade
- Aluminium Balustrade to Balcony

The Lockleys

Ground Floor Living	138.6 m ²
Upper Floor Living	68.7 m ²
Garage	43.3 m ²
Patio	14.4 m ²
Porch	5.0 m ²
Balcony	3.5 m ²
Total Area	273.4 m²
House Width	11.9 m
House Depth	22.0 m



Listen, advise and create



modern classic

The Lockleys

- A home with all the living space you could want, yet suited to smaller blocks and still offering plenty of features including a private living room at the front for those quiet relaxing times, state of the art kitchen with large family and meals area leading onto the undercover patio.
- The master bedroom is on the ground floor and has its own generous ensuite which includes twin vanity and an enormous shower with a feature glass block walls.
- The second and third bedrooms form a children's or visitor's retreat on the first floor and are double bedroom size. They have their own private facilities and a sitting area to relax in.
- This home is particularly suited to "empty nesters" who would live essentially on the ground floor with a practical upstairs area for children or visitors.



traditional



contemporary metro